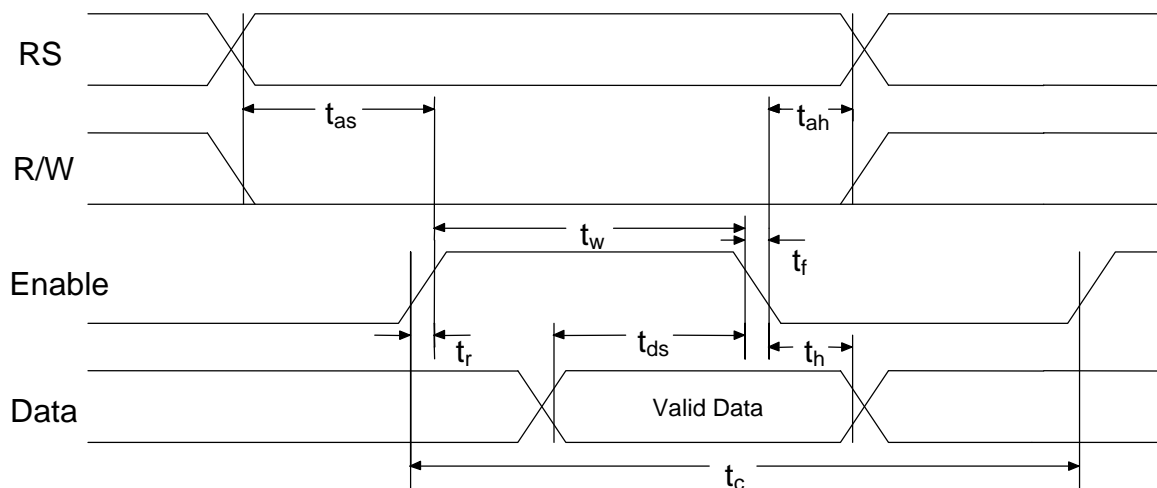


Instruction	RS	RW	D7	D6	D5	D4	D3	D2	D1	D0	Description	Clocks
NOP	0	0	0	0	0	0	0	0	0	0	No Operation	0
Clear Display	0	0	0	0	0	0	0	0	0	1	Clears display & sets address counter to zero.	165
Cursor Home	0	0	0	0	0	0	0	0	1	0	Sets address counter to zero, returns shifted display to original position. DDRAM contents remains unchanged.	3
Entry Mode Set	0	0	0	0	0	0	0	1	I/D	S	Sets cursor move direction, and specifies automatic shift.	3
Display Control	0	0	0	0	0	0	1	D	C	B	Turns display (D), cursor on/off (C) or cursor blinking(B).	3
Cursor/display shift	0	0	0	0	0	1	S/C	R/L	0	0	Moves cursor and shift display. DDRAM contents remains unchanged.	3
Function Set	0	0	0	0	1	DL	N	M	G	0	Sets interface data width(DL), number of display lines (N,M) and voltage generator control (G).	3
Set CGRAM Addr	0	0	0	1	Character Generator RAM					Sets CGRAM Address	3	
Set DDRAM Addr	0	0	1	Display Data RAM Address					Sets DDRAM Address	3		
Busy Flag & Addr	0	1	BF	Address Counter					Reads Busy Flag & Address Counter	0		
Read Data	1	0	Read Data					Reads data from CGRAM or DDRAM	3			
Write Data	1	1	Write Data					Writes data from CGRAM or DDRAM	3			

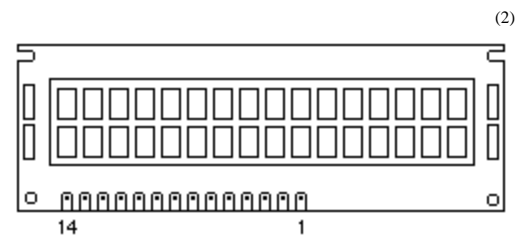
Write Cycle



Parameter	Symbol	Min ⁽¹⁾	Typ ⁽¹⁾	Max ⁽¹⁾	Unit
Enable Cycle Time	t_c	500	-	-	ns
Enable Pulse Width (High)	t_w	230	-	-	ns
Enable Rise/Fall Time	t_r, t_f	-	-	20	ns
Address Setup Time	t_{as}	40	-	-	ns
Address Hold Time	t_{ah}	10	-	-	ns
Data Setup Time	t_{ds}	80	-	-	ns
Data Hold Time	t_h	10	-	-	ns

Note ¹ The above specifications are a indication only. Timing will vary from manufacturer to manufacturer.

Note ² A 2 line by 16 Character LCD Module is Pictured. Data will work on most 1 line x 16 character, 1 line x 20 character, 2 line x 16 character, 2 line x 20 character, 4 lines x 20 character, 2 lines x 40 character etc. modules compatible with the HD44780 LCD Module.



Pin No	Name	I/O	Description
1	Vss	Power	GND
2	Vdd	Power	+5v
3	Vo	Analog	Contrast Control
4	RS	Input	Register Select
5	R/W	Input	Read/Write
6	E	Input	Enable (Strobe)
7	D0	I/O	Data LSB
8	D1	I/O	Data
9	D2	I/O	Data
10	D3	I/O	Data
11	D4	I/O	Data
12	D5	I/O	Data
13	D6	I/O	Data
14	D7	I/O	Data MSB